

DTF



WHY WE ARE YOUR PARTNER

Over the last few years, we have grown steadily together with our customers and so has our product range. If you have known us as a wholesaler up to now, we have steadily expanded our range in recent years and are also to you as a reliable system partner in various areas of the digital printing industry.

With in-depth expertise, we provide you with advisory support before your purchase to help you identify the printing or transfer system that best suits your requirements.

Even after your purchase, you can rely on Print Equipment - in parallel to our range, we are also constantly expanding our service and support team to meet your requirements.

Benefit from local support technicians who ensure quick and cost-optimized response times or gain additional value by signing a maintenance and service contract.

With first-class service, technical expertise and a lot of heart, you will experience that you are not just a customer, but an important PARTNER for us.

It is clear to us that your needs are our top priority!



Your success is what drives us!



Mario Panter, Managing Director

Contents

How DTF Transfer Printing Works.....	3
System Comparison of Roll-to-Roll Printing Systems.....	4
Detailed Overview	6
Articles for Finishing	12
RIP Software.....	14
Further Processing (Cutting & Pressing)	16
Consumables (Ink, Film & Cleaning).....	18
Processing Matrix (Parameters).....	23

Imprint

Published by Print Equipment GmbH & Co KG, Im Stühlinger 10, D-77833 Ottersweier

Editorial office

Bernard Hofer-von Hörsten

Typesetting & Design

Silvia Burger

© Photos / Graphics

Lisa Weber

Edition status 04/2025

©Print Equipment 2025

Use of images and text (including extracts) is only permitted with our express consent. Errors excepted.

All price offers are non-binding and subject to prior.



You can find the video instructions here!

This is how it works!

In a Few Steps to the Finished Textile:

The creation of print data for the desired design is done on a PC - the finished print data is then transferred directly to the printing system. During the following printing process, water-based pigment inks are applied to an inkjet-coated PET transfer film. The transfer film is then sprinkled with hot-melt adhesive powder and subsequently gelled. The fixed, finished DTF transfer can now be applied to the desired textile substrate. DTF transfers impress with their brilliant colour results and good durability.



1. Print in CMYK & White

Any design (CMYK+W) is printed onto the DTF film. This can be done using either a format printing system or a roll printing system.



2. Apply Hotmelt Adhesive

A powdered hotmelt adhesive (DTF transfer powder) is applied to the ink layer. With format printing systems, this is often done manually; with roll systems, the powder is applied using a powder and fixation unit.



3. Gelling

The hot melt adhesive is then gelled onto the design under heat. The adhesive forms a uniform layer, enabling strong adhesion to various textiles during the later transfer process.



4. Transfer

The finished DTF transfer is placed on the product to be printed, pressed using a transfer press and the carrier film is peeled off after the pressing process.

PRINTING SYSTEMS

ROLLER GOODS

Roll-to-roll printing systems are suitable for medium to high print volumes and can be used as “stand-alone”, “roll-to-roll” or “roll-to-sheet” applications. Depending on your print volume, you can choose between systems equipped with two or four print heads.



Printing System

XP600-Pro, incl. fuser unit for 450 mm media width

Print Head Technology:	2x Epson® I3200-A1
Max. Print Resolution	300 Npi/row / 600 Npi / 2 rows
Print Speed (Production Mode):	~ 6.5 m ² /hour or 14-15 linear meters/hour (450 mm film width)
Colour Configuration / Channels:	1st head: 4x W / 2nd head: CMYK
Max. Media Width / Print Width:	450 mm / 425 mm
Ink Technology:	Water-based pigment inks (DuPont™ 1600 series / Kodak DTF/FTF Inks)
Ink Supply:	Bulk-System 1.000 ml CMYK / 1.000 ml white
Power Supply:	230 V AC (printing system) 230 V AC (fuser unit 450)
Power Consumption:	1.500 Watt (printing system) 3.590 V AC (fuser unit 450)
Required Operating System:	Windows 8, 10, 11 (64-bit)
Interface:	LAN adapter
Dimensions (WxDxH):	1.330 x 525 x 435 mm (pressure bridge) 1.330 x 750 x 1.415 mm (incl. stand) 2.350 x 770 x 965 mm (fuser unit 450)
Required Floor Space (WxD)	1.330 x 2.930 mm (systems) 2.930 x 4.530 mm (incl. service and danger area)
Weight:	~ 150 kg (pressurised system) ~ 185 kg (fuser unit)
Required Operating Conditions:	20-25 °C, 40-60 % rel. humidity, non-condensing
Special Features:	Circulation system (W)
RIP software (Included)	-
RIP software (optional)	Print Suite (Digital Factory Apparel Roll Edition - powered by Fiery®)
Application Variant:	Roll-to-roll / roll-to-sheet
Recommended Minimum Production Volume:	25 running meters / week, with 2-3 printing days / week
Warranty:	DTF roll printing systems are covered by a bring-in service warranty. The warranty period is 12 months for electronics and mechanics and 4 months for print heads. Other ink-carrying parts such as the capping station, dampers, pumps or tubing system are excluded.
Warranty Extension / Service Contract	Optionally available: customised service contract

Roll-to-roll printing systems in the high-volume range are suitable for high to very high print volumes and can be used in a „roll-to-roll“ or „roll-to-sheet“ application.



XP600-Pro, incl. fuser unit for 600 mm media width

XP600-Pro-4HD (4-head printing system)

2x Epson® I3200-A1

4x Epson® I3200-A1

300 Npi/row / 600 Npi / 2 rows

300 Npi/row / 600 Npi / 2 rows

~ 6 m²/hour or 11-12 linear meters/hour (600 mm film width)

~ 16 m²/hour or ~25,6 linear meters/hour (600 mm film width)

1st head: 4x W / 2nd head: CMYK

1st + 2nd head: 4x W / 3rd +4th head: CMYK

600 mm / 575 mm

600 mm / 575 mm

Water-based pigment inks
(DuPont™ 1600 series / Kodak DTF/FTF Inks)

Water-based pigment inks
(DuPont™ 1600 series / Kodak DTF/FTF Inks)

Bulk-System 1.000 ml CMYK / 1.000 ml white

Bulk-System 1.500 ml CMYK / 1.500 ml white

230 V AC (printing system)
400 V AC (fuser unit 600)

230 V AC

1.500 Watt (printing system)
5.000 Watt, 400 V AC, 20 A (fuser unit 600)

1.500 Watt (printing system)
7.900 Watt, 400 V AC, 20 A (fuser unit 600 Speed)

Windows 8, 10, 11 (64-bit)

Windows 8, 10, 11 (64-bit)

LAN adapter

LAN adapter

1.330 x 525 x 435 mm (pressure bridge)
1.330 x 750 x 1.415 mm (incl. stand)
2.350 x 1.025 x 1.075 mm (fuser unit 600)

1.890 x 890 x 780 mm (pressure bridge)
1.890 x 890 x 1.660 mm (incl. stand)
1.100 x 2.840 x 1.080 mm (fuser unit 600 Speed)

1.330 x 2.930 mm (systems)
2.930 x 4.530 mm (incl. service and danger area)

1.890 x 3.630 mm (systems)
3.490 x 5.090 mm (incl. service and danger area)

~ 150 kg (pressurised system)
~ 260 kg (fuser unit)

~ 194 kg (pressurised system)
~ 282 kg (fuser unit)

20-25 °C, 40-60 % rel. humidity, non-condensing

20-25 °C, 40-60 % rel. humidity, non-condensing

Circulation system (W)

Circulation system (W)

-

-

Print Suite (Digital Factory Apparel Roll Edition - powered by Fiery®)

Print Suite (Digital Factory Apparel Roll Edition - powered by Fiery®)

Roll-to-roll / roll-to-sheet

Roll-to-roll / roll-to-sheet

50 25 running meters / week, with 2-3 printing days / week

50 running meters / day, with daily production

DTF roll printing systems are covered by a bring-in service warranty. The warranty period is 12 months for electronics and mechanics and 4 months for print heads. Other ink-carrying parts such as the capping station, dampers, pumps or tubing system are excluded.

DTF roll printing systems are covered by a bring-in service warranty. The warranty period is 12 months for electronics and mechanics and 4 months for print heads. Other ink-carrying parts such as the capping station, dampers, pumps or tubing system are excluded.

Optionally available: customised service contract

Optionally available: customised service contract

XP600-PRO SERIES | PE-450 (Media widths up to 450 mm)

OVERVIEW

The purchase is recommended for the following (minimum) production volume:

25 running meters/week, with 2-3 printing days per week

Print heads and print speed (DTF Mode):

Number of printheads:	2x Epson® I3200-A1	
Droplet size:	Minimum 3.8 pl / Maximum 9.4 pl	
Print speed:	Maximum	Production speed
DIN A4 format / hour:	192	96
meter / hour:	28.8 linear meters / hour	14-15 linear meters / hour
Square meters / hour:	13.0 m ² / hour	6.50 m ² / hour

Features:

- Circulation system (white)
- Nozzle management
- Touchscreen panel
- Print head wiper unit Running



Print Cost Calculation (determined using Print Suite Rip software)

(Digital Factory, Apparel Edition - powered by Fiery®):

Design for cost determination: „Altona Visual“

Print format: 210 x 297 mm, print file: PNG, (RGB data)

Resolution: 720 x 1.800 dpi, 10 passes (DTF colour)

Colour settings: White coverage: 80 % / white underbase: 80 % white under black

Media Calculation DuPont™:

	DIN A4	m ²	Calculation Price
DTF film „PE Hot Brand“	0,0948 €	1,5166 €	450 mm roll: 68,25 € (45 m ²)
Sense of Colour™ hot melt adhesive	0,0968 €	1,5488 €	25 kg: 485,00 € (1 kg = 19,40 €)
CMYK ink: „DuPont™“	0,0282 €	0,4512 €	Litre = 71,50 €
WHITE ink: „DuPont™“	0,0538 €	0,8608 €	Litre = 77,50 €
Cleaning surcharge 10 %	0,0082 €	0,1312 €	
Total costs:	0,2818 €	4,5086 €	(= 2,6837 € / running metre)

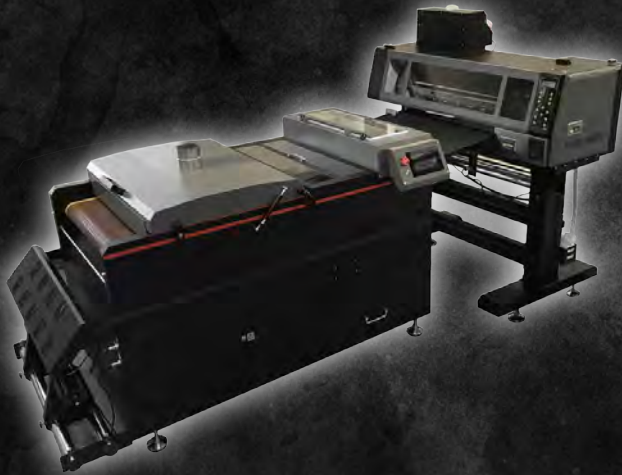
Media Calculation Kodak:

	DIN A4	m ²	Calculation Price
DTF film „PE Hot Brand“	0,0948 €	1,5166 €	450 mm roll: 68,25 € (45 m ²)
Sense of Colour™ hot melt adhesive	0,0968 €	1,5520 €	25 kg: 485,00 € (1 kg = 19,40 €)
CMYK ink: „Kodak“	0,0237 €	0,3792 €	Litre = 60,00 €
WHITE ink: „Kodak“	0,0451 €	0,7216 €	Litre = 65,00 €
Cleaning surcharge 10 %	0,0069 €	0,1104 €	
Total costs:	0,2673 €	4,2798 €	(= 2,5475 € / running metre)

Warranty:

- Bring-in service warranty. The warranty period is 12 months for electronics and mechanics and 4 months for print heads. Other ink-carrying parts such as the capping station, dampers, pumps or hose system are excluded.
- Print Equipment Service & Maintenance Contract: Optionally available as a standard or customised agreement. (Combination of various services or contract contents possible).

XP600-PRO SERIES | 450ER DTF PRINTING SYSTEM FOR ROLL GOODS



DTF SYSTEM BUNDLE

The DTF system bundle XP600-PRO consists of the XP600-PRO printing system and the corresponding 450 mm fuser unit.

The XP600-PRO printing system impresses with its technical innovations and compact design. The printing technology utilizes two Epson® PrecisionCore I3200-A1 printheads, which are arranged in a linear offset configuration, enabling simultaneous colour application of CMYK and white.

The production output of the XP600-Pro is in the range of 14-15 meters/hour, in combination with a film width of 450 mm.

XP600-Pro Series| 450 Series DTF starter pack, consisting of:

- XP600-PRO printing system incl. white ink circulation, ink level control (acoustic)
- DTF-XP-PE-450 fuser unit (450 mm pass width)
- RIP software Print Suite DTF Roll-Edition (powered by FIERY®)
- 1 set of ink (DuPont™ Ink or Kodak Ink) 6x 1.000 ml CMYKWW Incl. circulation system (colour white)
- Cleaning cloths, cleaning sticks, syringes, maintenance liquid, cleaning fluid
- Operating instructions, mains plug, USB flash drive, USB cable
- On-site installation



XP600-PRO SERIES | PE-600 (Media widths up to 600 mm)

OVERVIEW

The purchase is recommended for the following (minimum) production volume:

50 running meters / week, with 2-3 printing days per week

Print heads and print speed (DTF mode):

Number of print heads:	2x Epson® I3200-A1	
Droplet size:	Minimum 3.8 pl / Maximum 9.4 pl	
Print speed:	Maximum	Production speed
format / hour:	192	96
Running meters / hour:	23,4 running meters / hour	11,7 running meters / hour
Square meters / hour:	12 m ² / hour	6,00 m ² / hour

Features:

- Circulation system (white)
- Nozzle management
- Touchscreen panel DIN A4



Print Cost Calculation (determined using Print Suite Rip software)

(Digital Factory, Apparel Edition - powered by Fiery®):

Design for cost determination: „Altona Visual“

Print format: 210 x 297 mm, print file: PNG, (RGB data)

Resolution: 720 x 1.800 dpi, 10 passes (DTF colour)

Colour settings: White coverage: 80 % / white underbase: 80 % white under black

Media Calculation DuPont™:

	DIN A4	m ²	Calculation Price
DTF film „PE Hot Brand“	0,0941 €	1,5058 €	600 mm roll: 90,35 € (60 m ²)
Sense of Colour™ hot melt adhesive	0,0968 €	1,5520 €	25 kg: 485,00 € (1 kg = 19,40 €)
CMYK ink: „DuPont™“	0,0282 €	0,9552 €	Litre = 71,50 €
WHITE ink: „DuPont™“	0,0538 €	0,8608 €	Litre = 77,50 €
Cleaning surcharge 10 %	0,0082 €	0,1312 €	
Total costs:	0,2811 €	4,4978 €	(= 2,6124 € / running metre)

Media Calculation Kodak:

	DIN A4	m ²	Calculation Price
DTF film „PE Hot Brand“	0,0941 €	1,5058 €	600 mm roll: 90,35 € (60 m ²)
Sense of Colour™ hot melt adhesive	0,0968 €	1,5520 €	25 kg: 485,00 € (1 kg = 19,40 €)
CMYK ink: „Kodak“	0,0237 €	0,3792 €	Litre = 60,00 €
WHITE ink: „Kodak“	0,0451 €	0,7216 €	Litre = 65,00 €
Cleaning surcharge 10 %	0,0069 €	0,1104 €	
Total costs:	0,2666 €	4,2690 €	(= 2,5411 € / running metre)

Warranty:

- Bring-in service warranty. The warranty period is 12 months for electronics and mechanics and 4 months for print heads. Other ink-carrying parts such as the capping station, dampers, pumps or hose system are excluded.
- Print Equipment Service & Maintenance Contract: Optionally available as a standard or customised agreement. (Combination of various services or contract contents possible).

XP600-PRO SERIES | 600ER DTF PRINTING SYSTEM FOR ROLL GOODS



DTF SYSTEM BUNDLE

The DTF system bundle XP600-PRO consists of the XP600-PRO printing system and the corresponding 600 mm fuser unit.

The XP600-PRO printing system impresses with its technical innovations and compact design. The print head technology used is two Epson® PrecisionCore I3200-A1 print heads, which are arranged in a linear offset, simultaneous colour application of CMYK and white.

The running performance of the XP600-Pro in the production setting is in the range of 11-12 running metres per hour.

XP600-Pro Series| 600 Series DTF starter pack, consisting of:

- XP600-PRO printing system incl. white ink circulation, ink level control (acoustic)
- DTF-XP-PE-600 fuser unit (600 mm passage width)
- RIP software Print Suite DTF Roll-Edition (powered by FIERY®)
- 1 set of ink (DuPont™ Ink or Kodak Ink) 6x 1.000 ml CMYKWW Incl. circulation system (colour white)
- Cleaning cloths, cleaning sticks, syringes, care liquid, cleaning fluid
- Operating instructions, mains plug, USB flash drive, USB cable
- On-site installation



XP600-PRO-4HD (4 PRINT HEAD SYSTEM)

OVERVIEW

The purchase is recommended from the following (minimum) production volume:

250 running meters. week, with daily use

Print heads and print speed (DTF mode):

Number of printheads:	4x Epson® I3200-A1	
Droplet size:	minimum 3.8 pl / maximum 9.4 pl	
Print speed:	Maximum	Production
format / hour:	418	209
Running meter / hour:	38,4 running meters / hour	25,6 running meters / hour
Square meters / hour:	24 m ² / hour	16,00 m ² / hour

Features:

- Circulation system (white)
- Nozzle management
- Print head wiper unit DIN A4



Print Cost Calculation (determined using Print Suite Rip software)

(Digital Factory, Apparel Edition - powered by Fiery®):

Design for cost determination: „Altona Visual“

Print format: 210 x 297 mm, print file: PNG, (RGB data)

Resolution: 720 x 1.800 dpi, 10 passes (DTF colour)

Colour settings: White coverage: 80 % / white underbase: 80 % white under black

Media Calculation DuPont™:

	DIN A4	m ²	Calculation Price
DTF film „PE Hot Brand“	0,0941 €	1,5058 €	600 mm roll: 90,35 € (60 m ²)
Sense of Colour™ hot melt adhesive	0,0968 €	1,5520 €	25 kg: 485,00 € (1 kg = 19,40 €)
CMYK ink: „DuPont™“	0,0282 €	0,9552 €	Litre = 71,50 €
WHITE ink: „DuPont™“	0,0538 €	0,8608 €	Litre = 77,50 €
Cleaning surcharge 10 %	0,0082 €	0,1312 €	
Total costs:	0,2811 €	4,4978 €	(= 2,6124 € / running metre)

Media Calculation Kodak:

	DIN A4	m ²	Calculation Price
DTF film „PE Hot Brand“	0,0941 €	1,5058 €	600 mm roll: 90,35 € (60 m ²)
Schmelzkleber „Sense of Color“	0,0968 €	1,5520 €	25 kg: 485,00 € (1 kg = 19,40 €)
CMYK ink: „Kodak“	0,0237 €	0,3792 €	Litre = 60,00 €
WHITE ink: „Kodak“	0,0451 €	0,7216 €	Litre = 65,00 €
Cleaning surcharge 10 %	0,0069 €	0,1104 €	
Total costs:	0,2666 €	4,2690 €	(= 2,5411 € / running metre)

Warranty:

- Bring-in service warranty. The warranty period is 12 months for electronics and mechanics and 4 months for print heads. Other ink-carrying parts such as the capping station, damper, pumps or hose system are excluded.
- Print Equipment Service & Maintenance Contract: Optionally available as a standard or customised agreement. (Combination of different services or contract contents possible)

XP600-PRO (4-HEAD) DTF PRINTING SYSTEM FOR ROLL GOODS



4-HEAD PRINTING SYSTEM

The DTF system bundle XP600-PRO-4HD consists of the XP600-PRO-4HD printing system and the corresponding 600 mm fuser unit (long version).

The 4-head system with a maximum media width of 600 mm, is designed for high to very high print volumes, making it ideal for both business and industry use. The recommended production volume is 250 running meters per week. The XP600-PRO-4HD printing system impresses with its technical innovations and compact design. It features four Epson® PrecisionCore I3200-A1 print heads, arranged in a linear offset configuration, enabling simultaneous colour application of CMYK and white.

The running performance of the XP600-PRO-4HD in the production setting is approximately 16 m²/hour (25.6 running meters/hour). (equivalent to 2 rolls / 8 hours working day).

XP600-Pro (4-Head) DTF starter pack, consisting of:

- XP600-PRO 4-head printing system, incl. white ink circulation, ink level control (acoustic)
- DTF-XP-PE-600-4HD high-speed fuser unit (600 mm passage width)
- RIP software Print Suite DTF Roll-Edition (powered by FIERY®)
- 1 set of ink (DuPont™ Ink or Kodak Ink) 6x 1.000 ml CMYKWW Incl. circulation system (colour white)
- Cleaning cloths, cleaning sticks, syringes, care liquid, cleaning fluid
- Operating instructions, mains plug, USB flash drive, USB cable
- On-site installation



REFINE ARTICLE FOR

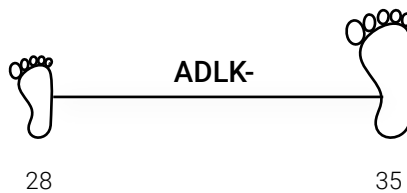
BATHING SLIPPERS



The DTF process is suitable for a wide range of textiles, as well as other materials such as PVC slipper with printable flap. The moulded footbed and wide, stable tongue ensure a secure fit, while the slip-resistant sole provides added protection, particularly in wet environments.

Adults (ADL-) and Children (ADLK-)

The bathing slippers are available in various colours and sizes for both adults and children:



Item no.	Description	Colour	Size	Price
ADLK-(colour code)-(size)	Bathing slippers for children	KK, KW, RBW, GW, RSW, RW, WW, OO	28 - 35	from 5,48 €
ADL-KK-(colour code)-(size)	Bathing slippers for adults	KK, KW, RBW, GW, RSW, RW, WW, OO	36 - 48	from 5,66 €

Advantages:

- Individual sizes
- slip-resistant sole
- Moulded footbed

Anwendungsbereiche:

- Sports clubs and associations
- Fan accessories
- Spa and hotels
- Leisure activities



Worktops:

The basic variant can be found under the article number: **PLA-08x45**.

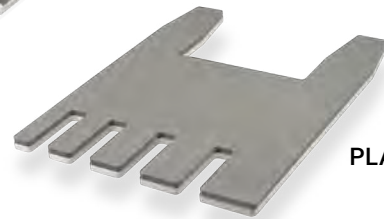
We recommend the **PLA-ADL-V2** worktop, which allows up to 4 flip-flops to be printed simultaneously in a single pressing process.

Both variants are compatible with SEFA transfer presses.



PLA-08x45

132,00 €



PLA-ADL-V2

322,00 €



Scan the QR code to
order now!

RIP-SOFTWARE

PRINTSUITE



RIP-Software PRINTSUITE - based on Digital Factory, powered by FIERY

Automatic job pre-production tools

- Job Colour set by pipette
- Applying underfill/overfill to all colour layers
- Export of template layouts with improved template user interface
- Quick image duplication via interface
- Visual print preview
- Multi-copy with distance control (in-queue function)
- Image and vector cropping (in-queue function)
- Image and vector rotation (in-queue function)
- Image and vector mirroring/inverting (in-queue function)
- Image and vector scaling (in-queue function)
- Soft proofing



Simplified Job Management & Production Functions

- Easy queue setup wizard for quick creation of production queues
- Barcode support for automated production
- Extended plug-ins for Corel, Illustrator, and Photoshop, with direct sending to the queues and automatic grounding
- Detailed job costing tools
- Automatic or manual job scheduling
- On-the-fly job prioritisation using simple drag and drop
- Job archiving, history tracking, print status and job recording
- Job notes

Unique T-shirt/Apparel Functions

- Preset colour profiles for white, black, and coloured textiles
- Template support for precise graphic positioning on textiles
- „KnockMeBlackOut“: Removes black and grey shades
- „KnockMeColorOut“: Removes white and other colours
- White ink level Support
- Direct sending of jobs with primer from the design application
- Automatic underfilling in the queues

New! Advanced High-Fidelity Colour Management Functions:

- Simple colour adjustments
- Colour matching wizard for merging ICC rendering intents
- Easy switching between print modes (reducing queues and management time)
- Highest colour rendering quality,
- ICC-compliant CMM engine (ColorLogic)

Faster and Even More Robust

- User-defined drivers and specially created colour profile for DTF systems from the PE range
- Fast 64-bit architecture
- Optimised multiple job processing (RIP threading)
- Simplified navigation; queue tab, page preview and job properties
- Grid option in the job preview window
- Job information via „mouse-over image“
- Quick reprinting with the job backup option (.jbk file)
- Support for Windows 8, 10, 11 (64 bit)
- Optimised RIP speed
- PDF Workflow Support
- Direct sending of jobs from design applications

DTF FURTHER PROCESSING

ACCESSORIES



DTF Drying Oven

Drying ovens are used for manually gelling DTF transfers. They are available in two sizes and can accommodate a gelling area of up to 410 x 580 mm.



Item no.	Description	Gelling area	Price
DTF-OFEN-A3P	DTF drying oven, for DIN A3+ format	297 x 420 mm	499,00 €
DTF-OFEN-A2	DTF drying oven, for DIN A2 format	410 x 580 mm	675,00 €

DTF Shaker Station

A print sheet of up to 400 x 500 mm is placed into the shaker station. The upper section contains a hot-melt adhesive storage compartment, which can be opened with the press of a button.

Hot-melt adhesive trickles onto the printed sheet, while excess adhesive is shaken off and falls into the collection drawer.

This material can later be returned to the powder supply compartment.

The system simplifies manual dusting and saves time.



Item no.	Description	Price
DTF-PE-4050	DTF Shaker Station	990,00 €

DTF Stainless Steel Shaker for Powder

The stainless-steel spreader with a removable lid is used for manual application, making it easier to dose the hot melt adhesive.



Item no.	Description	Price
DTF-BOX-CAN	Stainless steel shaker for DTF powder, designed for precise dosing.	9,90 €

DTF Powder Tray

The DTF powder tray serves as an ideal drip tray for manual application of transfer powder. The scope of delivery includes a grid and a custom-fit cover.



Item no.	Description	Price
DTF-BOX-A3	Powder tray incl. grid, 470 x 370 mm	49,90 €

DTF FURTHER PROCESSING

CUTTING SYSTEMS

DTF Cutting System with Guillotine (X-Cut)

- Inline production: Process formats up to 800 x 500 mm efficiently in a single pass.
- Lower production costs (films, inks, labor) with the roll-to-sheet process compared to traditional format printing systems.
- Depending on the design, finished sheets can be immediately commissioned or further processed as needed.
- The print control strip can be used as a positioning aid.
- Efficient production: printing, processing, cutting, place, press
- Vacuum conveyor belt
- Optical fiducial recognition
- Adjustable machine feet, ensuring compatibility with most DTF systems using a belt/conveyor-based fusing unit.
- From roll to finished sheet: with 450 mm film widths, sheets measuring 450 x 330 mm can be precisely cut—eliminating the need to remove the print control strip before further processing.
- Unlike the roll-to-roll process, smaller motifs can be retrieved from the output at any time for immediate processing.



Scan the QR code to learn more!

DTF MultiCut Pro by Secabo

The Secabo DTF MultiCut Pro is the latest innovation on the market for precise cutting of printed materials. This brand-new flatbed plotter from Secabo featuring an integrated conveyor belt, sets new standards.

With an impressive cutting width of up to 640 mm and a length of 880 mm, it offers perfect solutions for: DTF textile transfers, UV & DTF adhesive films or sublimation prints.

The 7-inch touchscreen enables simple and intuitive operation, allowing you to adjust all parameters to meet your specific requirements.

For even more user-friendliness, plot files can be easily created using the included plug-ins for CorelDraw and Adobe Illustrator.



Cutting Plotter (DTF-Edition) by Graphtec

- Slitter rewriter for the automated processing of DTF films.
- Additional pressure rollers (4 rollers in total) ensure secure and even material guidance.
- Individual adjustment of pressure rollers for optimal contact pressure, tailored to the material
- Automatic detection of white DTF register marks using the Plug-in Cutting Master
- Adjustable automatic cross-cut for precise cutting
- No manual recutting required, enhancing efficiency
- PrintSuite integration available via plug-in



Specifications

- Dimensions: approx. 1.360 x 1.151 x 1.232 mm
- Warranty: 3 years
- Interface: USB 2.0 (Full Speed), Ethernet 10BASE-T/100BASE-TX
- Max. Media Width: 920 mm

TRANSFER PRESS

Transfer Press Carousel CLMB 6/3

The CLMB 6/3 Pneumatic Transfer Press Carousel features six stations or worktables and three transfer units, each of which can be individually adjusted (e.g., temperature or pressure settings).

The standard plates, sized 400 x 500 mm, are ideally suited for textile printing applications. Interchangeable plates in other sizes further expand the range of possible applications.

The carousel rotation can be carried out in both directions: manually, semi-automatically via foot pedal or fully automatically. Safety features such as light barriers and the robust construction of the CLMB meet industrial requirements, ensuring both user safety and high durability.



DTF CONSUMABLES

TINT



Epson® UltraChrome DG2 ink

Epson® UltraChrome DG2 inks are available in various container sizes. These inks are certified by ECO PASSPORT by OEKO-TEX® ensuring they meet high environmental and safety standards.

Item no.	Description	Contents	Price
EP-FDG-250-(colour code)	Cyan, Magenta, Yellow, Black, White	250 ml refill bag	108,00 €
EP-FDG-600-(colour code)	Cyan, Magenta, Yellow, Black, White	600 ml cartridge	185,00 €
EP-FDG-800-(colour code)	Cyan, Magenta, Yellow, Black, White	800 ml refill bag	247,00 €



Kodak DTF/FTF ink

KODACOLOR Film-to-Fabric (FTF) inks are high-quality, water-based pigment inks, certified according to ECO PASSPORT by OEKO-TEX®. These inks are compatible with Epson® -based printheads, including DX5, DX7, 5113, 4720 and I3200-A1.

Item no.	Description	Contents	Price
DTF-INK-KD-(colour code)	Cyan, Magenta, Yellow, Black	1.000 g bottle	60,00 €
DTF-INK-KD-W	White	1.000 g bottle	65,00 €



DuPont™ Artistri® 1600 Series DTF Ink

Thanks to its advanced formulation, the premium pigment textile ink ensures low-maintenance production and is perfect for printing large orders. The inks are certified according to ECO PASSPORT by OEKO-TEX®, GOTS version 6.0/7.0 and are compatible with Epson® -based printheads DX4, DX5, DX7, F-1080, 4720 and I3200-A1.

Item no.	Description	Contents	Price
DTF-INK-DU-(colour code)	Cyan, Magenta, Yellow, Black	1.000 g bottle	71,50 €
DTF-INK-DU-W	White	1.000 g bottle	77,50 €





DTF Transfer Powder Sense of Colour

The „Sense of Colour“ low-temperature hotmelt adhesive granulate is specially formulated for the films in the PE Brand series. This adhesive is ideal for textiles made of natural and synthetic fibers. Commonly used in workwear, team sports, and other applications. The grain size of 80-200 µ ensures excellent coverage, providing a pleasantly soft feel to the transfer.

Item no.	Description	Contents	Price
DTF-ADH-PEXF-01	DTF Transfer Powder Sense of Colour	1-kg-tin	25,40 €
DTF-ADH-PEXF-05	DTF Transfer Powder Sense of Colour	5-kg-bucket	114,00 €
DTF-ADH-PEXF-25	DTF Transfer Powder Sense of Colour	25-kg-bag	485,00 €



DTF Transfer Powder PE Diamond Grade

„Diamond Grade“ is a low-temperature hotmelt adhesive granulate (made in Germany) with a melting point of 110°C and above. The adhesive is designed for textiles made of natural and synthetic fibers, commonly used in workwear and team sports. With a 120 µ grain size, it ensures good coverage, and the finished transfer has a slightly firmer feel to the touch.

Item no.	Description	Contents	Price
DTF-ADH-PE-01	DTF Transfer Powder PE Diamond Grade	1-kg-tin	34,90 €
DTF-ADH-PE-05	DTF Transfer Powder PE Diamond Grade	5-kg-bucket	160,00 €
DTF-ADH-PE-20	DTF Transfer Powder PE Diamond Grade	20-kg-bag	625,00 €



DTF Transfer Powder Kodacolor FTF

Low-temperature hotmelt adhesive granules from Kodak, with a melting point starting at 110°C, are ideal for natural and synthetic fibers, specifically for funwear, workwear, and team sports applications. The 80-200 µ grain size ensures a pleasantly soft feel for the finished transfer.

Item no.	Description	Contents	Price
DTF-ADH-KD-01	DTF Transfer Powder Kodacolor FTF	1-kg-tin	25,90 €
DTF-ADH-KD-05	DTF Transfer Powder Kodacolor FTF	5-kg-bucket	119,00 €
DTF-ADH-KD-20	DTF Transfer Powder Kodacolor FTF	20-kg-bag	409,00 €



DTF CONSUMABLES

FILMS



DTF Transfer Film PE Brand Hot Peel / Double Coated Matt

The PE Brand Hot Peel transfer film is compatible with both hot peel and cold peel method. The carrier material has a thickness of 75 μ . The inkjet coating thickness allows for printing with standard or well-known DTF inks from various manufacturers.

Tip: The material should be pressed onto textiles at a maximum of 150°C. Finished transfers should be processed within 6 months if stored properly.



Formats

Item no.	Description	Quantity/Pack	Price
DTF-FOIL-PEHS-A4	DTF Transfer Film PE Brand, DIN A4	100 sheets/pack	38,00 €
DTF-FOIL-PEHS-A3	DTF Transfer Film PE Brand, DIN A3	100 sheets/pack	69,00 €
DTF-FOIL-PEHS-4050	DTF Transfer Film PE Brand, 40x50 cm	100 sheets/pack	99,00 €

Rolls

Item no.	Description	Quantity/Pack	Price
DTF-FOIL-PEHR-30	DTF Transfer Film PE Brand Roll	100 running meters x 30 cm	70,00 €
DTF-FOIL-PEHR-33	DTF Transfer Film PE Brand Roll	100 running meters x 33 cm	77,00 €
DTF-FOIL-PEHR-40	DTF Transfer Film PE Brand Roll	100 running meters x 40 cm	94,00 €
DTF-FOIL-PEHR-45	DTF Transfer Film PE Brand Roll	100 running meters x 45 cm	105,00 €
DTF-FOIL-PEHR-60	DTF Transfer Film PE Brand Roll	100 running meters x 60 cm	139,00 €
DTF-FOIL-PEHR-2-60	DTF Transfer Film PE Brand Roll	200 running meters x 60 cm	278,00 €



DTF transfer film Kodacolor FTF / Hot Peel

DTF transfer films from Kodak are suitable for processing using either the instant or hot-peel method. In the instant process, the film must be removed immediately while hot after opening the press. The material can be processed at temperatures of up to 150°C.



Formats

Item no.	Description	Quantity/Pack	Price
DTF-FOIL-KDHS-A3	DTF Transfer Film Kodacolor, DIN A3	100 sheets/pack	52,00 €
DTF-FOIL-KDHS-4050	DTF Transfer Film Kodacolor, 40x50 cm	100 sheets/pack	62,00 €

Rolls

Item no.	Description	Quantity/Pack	Price
DTF-FOIL-KDHR-45	DTF Transfer Film Kodacolor	100 running meters x 45 cm	102,00 €
DTF-FOIL-KDHR-60	DTF Transfer Film Kodacolor	100 running meters x 60 cm	136,00 €
DTF-FOIL-KDHR-80	DTF Transfer Film Kodacolor	100 running meters x 80 cm	187,00 €

DTF Transfer Film Forever Premium Matt (Instant Peel)

DTF Transfer Film from Forever (Made in Germany) is suitable for processing using the instant peel method. This means that the film must be peeled off „hot“ immediately after opening the press. The material can be processed at temperatures of up to 155°C.



Formats

Item no.	Description	Quantity/Pack	Price
DTF-FOIL-FHPS-A4	DTF Transfer Film Forever Premium Matt, Din A4	100 sheets/pack	42,00 €
DTF-FOIL-FHPS-A3	DTF Transfer Film Forever Premium Matt, Din A3	100 sheets/pack	59,00 €
DTF-FOIL-FHPS-4050	DTF Transfer Film Forever Premium Matt, 40x50 cm	100 sheets/pack	83,00 €

Rolls

Item no.	Description	Quantity/Pack	Price
DTF-FOIL-FHPR-30	DTF Transfer Film Forever Premium Matt	100 running meters x 30 cm	99,00 €
DTF-FOIL-FHPR-60	DTF Transfer Film Forever Premium Matt	100 running meters x 60 cm	198,00 €
DTF-FOIL-FHPR-120	DTF Transfer Film Forever Premium Matt	100 running meters x 120 cm	360,00 €

DTF CONSUMABLES

CLEANING & CARE

Regular cleaning and maintenance of printing systems contribute to their reliability. We offer the right cleaning products for all printing and ink systems in our range.

Item no.	Description	Contents	Price	Compatible with
EP-SP-F2200-MT	Maintenance Liquid	800 ml cartridge	32,50 €	Epson® SC-F2200
EP-SP-F2100-MK	Maintenance kit	1 set	21,60 €	Epson® SC-F2200
EP-SP-F2100-CLEAN	Cleaning cartridge	700 ml cartridge	16,00 €	Epson® SC-F2000/F2100
EP-SP-F2100-TCK	Tube cleaning kit	1 set	23,70 €	Epson® SC-F2000/F2100
EP-SP-F1000-CL	Cleaning Liquid	250 ml cartridge	12,50 €	Epson® SC-F1000
EP-SP-F1000-MT	Maintenance Liquid	250 ml cartridge	12,50 €	Epson® SC-F1000
EP-SP-F1000-HMK	Head Maintenance Set	1 set	22,50 €	Epson® SC-F1000
DTF-CL-KD-HM-CL	Kodacolor DTF/FTF Cleaning Solution for weekend cleaning	1-kg bottle	34,90 €	Printing systems, Kodak
DTF-CL-KD-HM-CP	Kodacolor DTF/FTF Capping Solution, for daily cleaning	1-kg bottle	34,90 €	Printing systems, Kodak
DTF-CL-KD-HM-FL	Kodacolor DTF/FTF Flushing Solution, e.g. for clogged nozzles	1-kg bottle	34,90 €	Printing systems, Kodak
DTF-CL-DU-CS-2	DuPont™ Cleaning / Flushing Solution KF200	2-l bottle	69,80 €	Printing systems, DuPont™
DTF-GLOVES	Nitrile gloves in dispenser box, blue, size M	100 pcs/pack	6,90 €	General
PP-CS-100-SLIM	Cleaning sticks lint-free, narrow tip	100 pcs/pack	20,80 €	General
PP-CS-50-LARGE	Cleaning sticks lint-free, wide tip	50 pcs/pack	12,80 €	General
PP-PIP-10	Plastic pipettes 3 ml	10 pcs/pack	4,90 €	General
TT-WIPES-25	Lint-free cleaning cloths	25 pcs/pack	5,35 €	General

MAINTENANCE & WEAR

In addition to regular cleaning and care, scheduled maintenance of the printing systems is also an important factor that contributes to production stability. You will find Maintenance & Care packages for the web-fed printing systems, which include wear parts that should be replaced annually.

Other common wear and spare parts are generally available from stock. The products listed in the catalogue represent just a small selection of our full range.

Item no.	Description	Contents	Price	Compatible with
DTF-XP-MAINT-KIT45	Maintenance & Care Package for XP600-Pro & Fuser Unit PE450 Scope of Delivery: 1x Circulation Pump, 1x Printhead Cover Adpater, 5x Butterfly Filters, 2x Capp-Top, 1x Wiper, 2x Scatter Wings, 8x Damper	1 set	665,80 €	XP600 Series
DTF-XP-MAINT-KIT60	Maintenance & Care Package for XP600-Pro & fuser Unit PE600 Scope of Delivery: 1x Circulation Pump, 1x Printhead Cover Adpater, 5x butterfly Filters, 2x Capp-Top, 1x Wiper, 2x Scatter Wings, 8x Damper	1 set	665,80 €	XP600 Series
EP-SP-F2200-HCK	Head Cleaning Kit	1 set	76,00 €	Epson® SC-F2200
EP-SP-F2100-HCK	Head Cleaning Kit	1 set	73,00 €	Epson® SC-F2100
EP-WASTE-2100	Waste Ink Container	1 pcs	23,00 €	Epson® SC-F2100

PROCESSING MATRIX

TEXTILES & SLIPPERS

	PE Brand Hot Peel	Kodak Hot Peel	Forever Premium Matt
NATURAL FIBRE (E.G. COTTON)			
Temperature:	~ 135-150 °C	~ 135-150 °C	~ 150 °C
Time:	10-15 seconds	10-15 seconds	10-15 seconds
Pressure:	2 to 3,5 bar	2 to 3,5 bar	3 bar
Repressing:	approx. 5 seconds	approx. 5 seconds	approx. 5 seconds
SYNTHETIC FIBRE (E.G. POLYESTER, POLYPROPYLENE)			
Temperature:	~ 120-130 °C	~ 120-130 °C	~ 120 °C
Time:	10-15 seconds	10-15 seconds	10-15 seconds
Pressure:	2 to 3,5 bar	2 to 3,5 bar	3 bar
Repressing:	approx. 5 seconds	approx. 5 seconds	approx. 5 seconds
MIXED FABRIC			
Temperature:	~ 120-130 °C	~ 120-130 °C	~ 135 °C
Time:	10-15 seconds	10-15 seconds	10-15 seconds
Pressure:	2 to 3,5 bar	2 to 3,5 bar	3 bar
Repressing:	approx. 5 seconds	approx. 5 seconds	approx. 5 seconds
FELT			
Temperature:	~ 120 °C	~ 120 °C	~ 120 °C
Time:	approx. 10 seconds	approx. 10 seconds	approx. 10 seconds
Pressure:	1 to 2 bar	1 to 2 bar	2 bar
Repressing:	approx. 5 seconds	approx. 5 seconds	approx. 5 seconds
CORK			
Temperature:	~ 120 °C	~ 120 °C	~ 120 °C
Time:	approx. 5 seconds	approx. 5 seconds	approx. 5 seconds
Pressure:	3 bar	3 bar	3 bar
Repressing:	approx. 5 seconds	approx. 5 seconds	approx. 5 seconds
SLIPPERS (ADL-)			
Temperature:	~ 110-115 °C	~ 110-115 °C	~ 110-115 °C
Time:	12-15 seconds	12-15 seconds	12-15 seconds
Pressure:	0,5 to 1 bar	0,5 to 1 bar	0,5 to 1 bar
Repressing:	no	no	no

Suitable parameters for the further processing of a finished DTF film depend on various factors, such as the selected print settings, ink types, hotmelt adhesives, the films used, or the textile substrate onto which the transfer will be applied. The information provided for further processing is non-binding and does not guarantee product or quality properties. Please conduct your own processing tests and verify the results according to your specific requirements!

CONTACT

Questions? We are here for you!

Support
sales@printequipment.de
Phone +49 7223 2815 400



Further articles at shop.printequipment.de/en
© 2025, Print Equipment GmbH & Co. KG

Follow us on

